

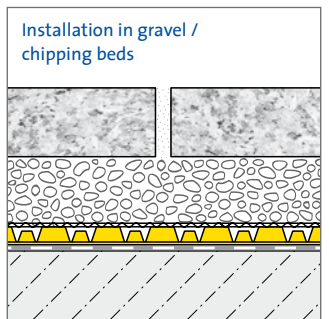
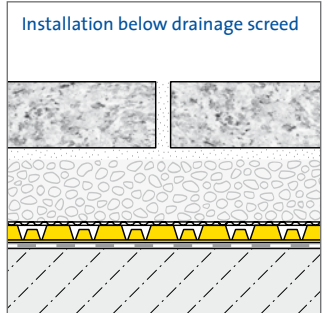
Since the usage and finishing of the product is not under our control, we accept no liability for the success of the work and can therefore only guarantee the nature of our products as per the accompanying product data sheets and in accordance with our general terms and conditions of sale. The properties listed here represent no guarantee with respect to the eventual use of our products. We reserve the right to make changes due to technical advances. Any other technical information given in the course of a consultation must be confirmed in writing. Colours shown here are restricted by the printing techniques and may differ from those exhibited by the products themselves. We also reserve the right to make alterations to the product technology or design. Only the current version of this data sheet is valid. Such versions are accessible by anyone via the internet. The issue of the latest data sheet invalidates all those that have been published beforehand.

DURABASE DD 80++

1/2

Drainage mats for highly water-permeable flooring structures in outdoor areas

- Installation Instructions -



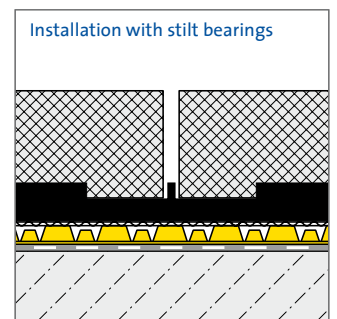
GENERAL:

Please refer to our DURABASE DD 80++ Product Information leaflet. You can view this leaflet online at www.dural.com.

The generally recognised rules of good engineering practice must always be observed!

The following applies to all products/materials: suitability with respect to mechanical and chemical stresses must be checked carefully prior to installation of the mats.

Protect the material from long periods of exposure to sunlight.

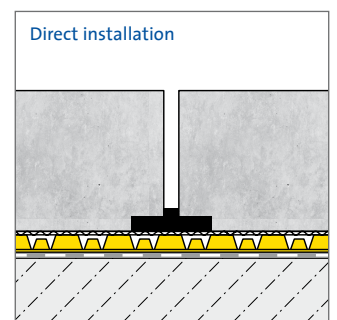


PREPARATION:

With DURABASE DD 80++, the choice of flooring construction is extremely flexible.

- Installation below drainage screed
- Installation in gravel / chipping beds
- Installation with stilt bearings
- Direct installation

Structural waterproofing, which has been selected to satisfy the requirements of the building, for example using DURABASE WP++ and a minimum gradient of approx. 2 % to drain the sealing level, must be in place prior to installation. It is not possible to lay tiles directly onto DURABASE DD 80++ using the thin bed installation procedure.



DURAL GmbH

Südring 11

D-56412 Ruppach-Goldhausen

Tel. +49 (0) 2602/9261-0

Fax +49 (0) 2602/9261-50

info@dural.com

DURABASE DD 80++

2/2

Drainage mats for highly water-permeable flooring structures in outdoor areas

- Installation Instructions -

INSTALLATION:

1. The professionally prepared subsurface must be level, able to bear weight and free from any components that could damage the structural waterproofing. Any possible corrections required to produce an adequate gradient must be completed prior to the installation of the DURABASE DD 80++ matting and must be located below the structural waterproofing. Sealing may be required to protect the compensation plane, e.g. using DURABASE WP++.
2. Lay the cut-to-size pieces with the mesh fabric facing upwards loose onto the structural waterproofing. Thanks to its special dimpled structure, DURABASE DD 80++ matting can be laid in any direction.
3. Bond the mats together at the joint producing shear resistance using DURABASE WP self-adhesive fabric tape (cut into 5 cm strips).
4. Wall connections can be sealed using DURABASE WP++ sealing tape as required. To do so, use flexible mortar to secure the sealing tape to both the DURABASE DD 80++ mat and the adjacent wall surface. With most subsurfaces, it is possible to use a hydraulic-setting flexible mortar, or a quick-bonding flexible adhesive in accordance with DIN EN 12004 / C2. Inward and outward facing corners must be produced using the corresponding DURABASE FLEX corner pieces.
5. Then apply the selected flooring structure, taking into account the respective specific technical regulations and the generally recognised rules of engineering.



DURAL GmbH
Südring 11
D-56412 Ruppach-Goldhausen
Tel. +49 (0) 2602/9261-0
Fax +49 (0) 2602/9261-50
info@dural.com