

Since the usage and finishing of the product is not under our control, we accept no liability for the success of the work and can therefore only guarantee the nature of our products as per the accompanying product data sheets and in accordance with our general terms and conditions of sale. The properties listed here represent no guarantee with respect to the eventual use of our products. We reserve the right to make changes due to technical advances. Any other technical information given in the course of a consultation must be confirmed in writing. Colours shown here are restricted by the printing techniques and may differ from those exhibited by the products themselves. We also reserve the right to make alterations to the product technology or design. Only the current version of this data sheet is valid. Such versions are accessible by anyone via the internet. The issue of the latest data sheet invalidates all those that have been published beforehand.

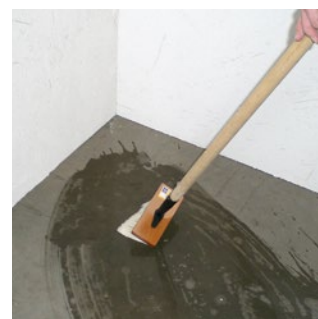
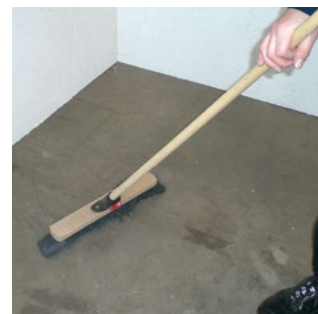
DURABASE SW

1/2

Footfall and thermal insulation matting system for dry indoor areas

- Installation Instructions -

DURAL



GENERAL:

In principle, the positions of the existing expansion joints in the installation subsurface must also be followed through to the same points in the SW matting and tiled flooring surfaces. These points can be produced using the corresponding DURAFLEX joint profiles. Additional field boundary joints must be located in accordance with the generally recognised rules of good tiling practice.

Please refer to our DURABASE SW Product Information leaflet. This leaflet is available online at www.dural.com.

The generally recognised rules of good engineering practice must always be observed!

The following applies to all products/materials: suitability with respect to mechanical and chemical stresses must be checked carefully prior to installation of the mats.

Protect the material from long periods of exposure to sunlight.



PREPARING THE SUBSURFACES:

The floor making up the subfloor must always be dry and free of any material that would impair adhesion. It must be level, able to bear weight and free from any cracks. Any possible repairs must be carried out prior to installation of the DURABASE SW matting. In damp areas, a seal between the SW matting and the tiled surface is required.

■ Concrete / screed

Long cracks in the subfloor must be suitably pegged and filled with resin. The floor must be level enough to conform to the stipulations of the standard DIN 18202 "Tolerances in civil engineering projects, Table 3".

DURAL GmbH

Südring 11

D-56412 Ruppach-Goldhausen

Tel. +49 (0) 2602/9261-0

Fax +49 (0) 2602/9261-50

info@dural.com

Footfall and thermal insulation matting system for dry indoor areas

- Installation Instructions -

■ OSB (SmartPly), plywood and chipboard flooring

OSB, plywood and chipboard panels must be screwed and primed, with glue applied to their tongues and grooves. The minimum material thickness is 22 mm. Wooden flooring must not bend or flex to any notable extent when walked on or put under load. The floor must be level enough to conform to the stipulations mentioned above, e.g. according to the aforementioned Table 3, the tolerance is 5 mm for lengths of 2 m.

■ Existing flooring surfaces

To save time, DURABASE SW mats can be laid over existing, existing flooring surfaces that fulfil the criteria mentioned earlier.

INSTALLATION INSTRUCTIONS:

1. Cut the DURABASE SW mats to size using a sharp utility knife. Also cut edge insulation strips, with an approximate width of 5 cm.
2. Prime the professionally prepared subsurface using a suitable adhesive primer.
3. Use a 4 x 4 mm serrated trowel to apply the thin-bed or flexible mortar to the subsurface. The adhesive should be chosen according to the subsurface type. The adhesive must bond and mechanically join to the carrier fabric of the DURABASE SW matting. With most subsurfaces, it is possible to use a hydraulic-setting flexible mortar, or a quick-bonding flexible adhesive in accordance with DIN EN 12004 / C2.
4. Lay the cut-to-size mats flush next to one another, without any gaps and across the entire surface of the dark-coloured side, preventing any adhesive from squeezing out over their edges. Here, pay attention to the adhesive bonding time. Then tap firmly with the smooth side of the serrated trowel. Loose laying of the SW mats is not possible.
5. To prevent acoustic bridges, affix edge insulation strips all the way around the walls. All junctions between the mats and at edge connections may be covered over using self-adhesive sealing tape (approx. 2 cm wide) as required.
6. Tiles can be laid immediately after the DURABASE SW matting has been installed if the floor area is relatively small and care is taken while moving across the matting. For larger areas or large-format tiles, the laying of tiles should only be started when the adhesive has sufficiently dried.
7. The tiled or natural stone surfaces can be laid directly onto the mat using the thin-bed procedure and a suitable tile adhesive (usually a hydraulically-setting flexible adhesive or fast-bonding flexible adhesive in accordance with DIN EN 12004 / C2). The usual rules for laying tiles should be observed, i.e. the thin-bed or flexible adhesive should be applied using a suitably sized serrated trowel. The minimum tile size should be 20 x 20 cm. Smaller tile formats can lead to minor joint cracks. Either normal or flexible grouting materials (DIN EN 13888 CG1 / CG2) can be used to finish the flooring surfaces.



DURAL GmbH

Südring 11

D-56412 Ruppach-Goldhausen

Tel. +49 (0) 2602/9261-0

Fax +49 (0) 2602/9261-50

info@dural.com