

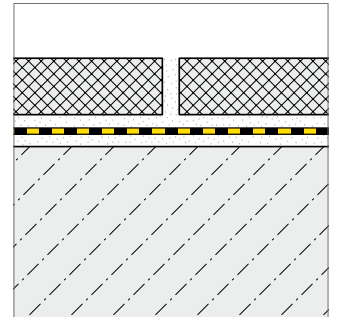
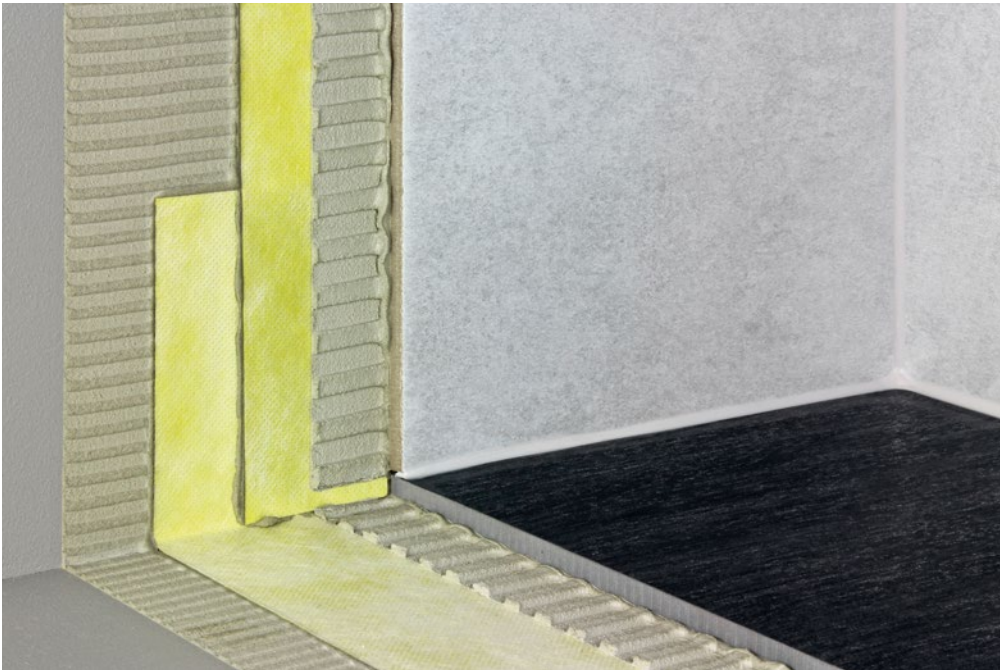
Since the usage and finishing of the product is not under our control, we accept no liability for the success of the work and can therefore only guarantee the nature of our products as per the accompanying product data sheets and in accordance with our general terms and conditions of sale. The properties listed here represent no guarantee with respect to the eventual use of our products. We reserve the right to make changes due to technical advances. Any other technical information given in the course of a consultation must be confirmed in writing. Colours shown here are restricted by the printing techniques and may differ from those exhibited by the products themselves. We also reserve the right to make alterations to the product technology or design. Only the current version of this data sheet is valid. Such versions are accessible by anyone via the internet. The issue of the latest data sheet invalidates all those that have been published beforehand.

DURABASE WP

1/2

Composite waterproof mat for walls and floors in indoor areas

- Installation Instructions -



GENERAL:

Please refer to our DURABASE WP Product Information leaflet. You can view this leaflet online at www.dural.com.

The generally recognised rules of good engineering practice must always be observed!

The following applies to all products/materials: suitability with respect to mechanical and chemical stresses must be checked carefully prior to installation of the mats.

Protect the material from long periods of exposure to sunlight.

DURABASE WP has been tested as a sealing material for use in conjunction with tiled and slab flooring for the waterproofing of buildings against non-pressing water under high stress, e.g. wet rooms in public and private buildings. Information on suitable system components is available on request.

INSTALLATION INSTRUCTIONS:

1. The floor making up the subfloor must be dry and free of any material that would impair adhesion. It must be level, able to bear weight and free from cracks. Any repairs must be carried out prior to the installation of DURABASE WP. The installation subsurfaces can be pretreated with a suitable primer as required. For cements screeds, a residual moisture level of less than 2 wt % is applicable, and for calcium sulphate screeds, less than 0.5 wt %. In addition, the regulations of the ZDB (German Construction Industry) Information Sheet „Composite Seals“ apply to substructures and subfloors.
2. Use a 4 x 4 mm serrated trowel to apply the thin-bed or flexible mortar to the subsurface. The adhesive should be chosen according to the subsurface type. The adhesive must bond and mechanically join to the carrier fabric of the DURABASE WP matting. With most subsurfaces, it is possible to use a hydraulic-setting flexible mortar, or a fast-setting flexible adhesive in accordance with DIN EN 12004 / C2.

DURAL GmbH

Südring 11

D-56412 Ruppach-Goldhausen

Tel. +49 (0) 2602/9261-0

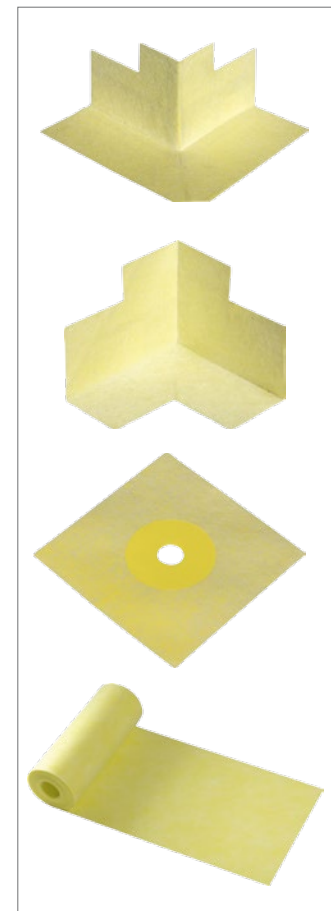
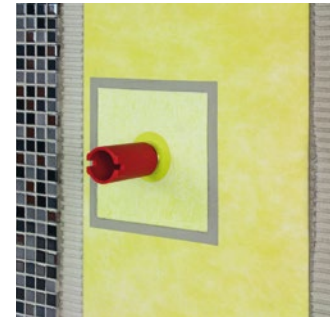
Fax +49 (0) 2602/9261-50

info@dural.com

Composite waterproof mat for walls and floors in indoor areas

- Installation Instructions -

3. Produce a watertight seal for transitional areas between walls and floors with WP sealing tape. Seal internal and external facing corners, as well as pipe connections, using DURABASE FLEX customised prefabricated moulded parts, making sure to bond these across the entire surface area to the subfloor, sealing layer or penetrations.
4. Embed the entire surface of the blank side of the cut-to-size mats into the adhesive. Here, pay attention to the adhesive bonding open time. Then use a smooth trowel or the smooth side of the serrated trowel to press the entire surface of the carrier fabric into the adhesive. Make sure you run the smooth side of the trowel over the matting at an angle, applying pressure in order to force out any air pockets work from the centre of the matting outwards. Loose laying of the WP mats is not possible. Lay the joints with an overlap of around 5–8 cm. Make sure that the overlap bonding is waterproof.
5. Then the tiles can be laid directly onto the matting using the thin-bed procedure it's not necessary to wait for the adhesive to dry. The generally recognised rules of tile laying must always be observed, i.e. application of the thin-bed or flexible adhesive using a trowel with the corresponding notch size. For surfaces which are subject to chemical loading, use a suitable grout product (reactive resin).



DURAL GmbH
Südring 11
D-56412 Ruppach-Goldhausen
Tel. +49 (0) 2602/9261-0
Fax +49 (0) 2602/9261-50
info@dural.com